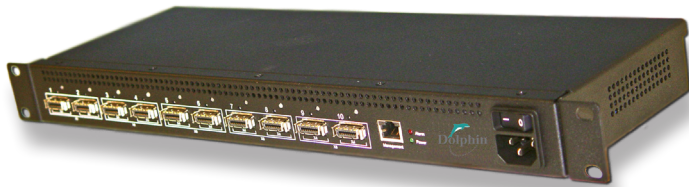


## DXS410 Dolphin Express Switch



High performance applications for the database, financial, and simulation markets require ultra fast response times, high throughput and high availability. Clustering multiple industry standard servers using a high-speed network enables these markets to provide outstanding performance at a fraction of the cost of traditional large scale server applications. Dolphin combines PCI Express I/O technology with clustering to produce its line of Dolphin Express products. The Dolphin Express product family integrates the ubiquity of PCI Express with the requirements of all types of cluster computing.

As the switching component of the Dolphin Express product family, the DXS410 Switch provides an economical, high performance switching solution for applications ranging from simulation to database clusters. This 10 port 1U cluster switch creates the only PCI Express based cluster solution with high bandwidth, low-latency and 100% software compatibility. The DXS410 enables mixed clusters of processing nodes and I/O for larger scale embedded and database clusters.

Each 10 Gbps port on the DXS410 is non-blocking and capable of being configured into a 20 Gbps port by using two ports. Both host and I/O expansion sub-system connections are supported through the switch and multiple switches can be connected to build larger systems. The 10 powered ports provide the flexibility of either copper or fiber-optic interface configurations. The DXS410 is part of an overall Dolphin Express solution that includes host adapters, I/O expansion systems, and Dolphin's SuperSockets™ software libraries. This overall combination provides a fast and reliable communication solution for applications that benefit from an ultra-low latency, high performance cluster interconnect.

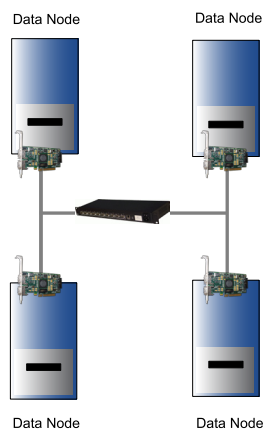
### Features

- High-performance, ultra low-latency switched 10-Gbps interconnect
- 20 Gbps interconnect performance for connecting host systems or expansion chassis
- Ten non-blocking, 10 Gbps full duplex (x4) ports-configurable to 20 Gbps by combining two ports
- Provides both copper and fiber optic cabling
- Options for connecting hosts or I/O
- 1U rackmountable chassis
- Management port for switch maintenance
- Switch supports multicast broadcast for reflective memory solutions

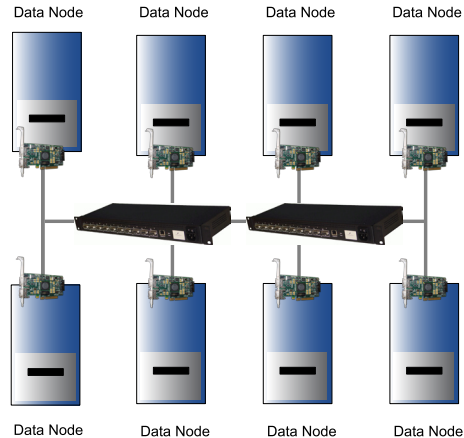
## Specifications

Link Speeds	10 Gbits/s duplex
Application Performance	1.33 Gbytes/s communication data rate on two channels 680 Mbytes/s communication data rate on single channel 0.95 microsecond latency (application to application)
Ports	10 non-blocking 10Gbps ports Configurable to 5 non-blocking 20Gbps ports
Cable connections	CX4 copper Cables -up to 10 meters Fiber-Optic cables- up to 300 meters
Management	1 -RS-232 console port Operational status and alert LEDs
Power	Auto-sensing power supply 25 Watts
Mechanical Dimensions	1U, 19 inch rackmountable chassis 420 (W) x 120 (D) x 45(H) mm
Operating Environment	Operating Temperature: 0°C -55°C Relative Humidity: 5% -95% non-condensing
Operating Systems	Windows 2000, Windows XP, Windows 2003, Windows 2008, Windows Vista, and Windows 7 Linux VX works
Regulatory	CE Mark, commercial FCC Class A
Product Codes	DXS410-A0

## Sample Configurations



**Single Switch**



**Multi-Switch**